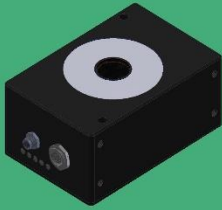


# PLASTIC TYPE

## SENSORS



SPECTRO-T-3-10-DIF-NIR/NIR



SPECTRO-T-3-FIO-NIR/NIR



KL-D-0°/45°-22-1200-d80/d110-A3.0-NIR

## MOBILE DEVICES



SPECTRO-T-3-0°/45°-MOBILE-P

SPECTRO-T-3-DIF/0°-MOBILE-P

SPECTRO-T-3-0°/45°-LAB-LF  
SPECTRO-T-3-DIF/0°-LAB-LF



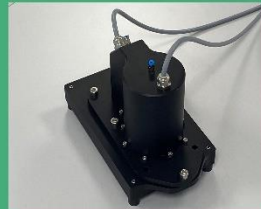
CALIB-DIF/0°



CALIB-0°/45°



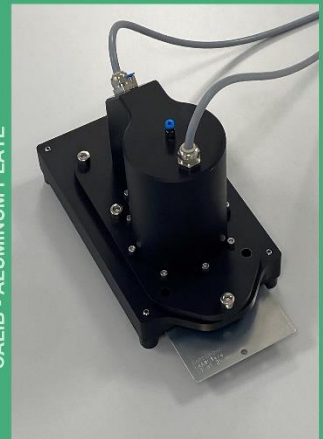
SPECTRO-T-3-DIF/0°-LAB-CMU



SPECTRO-T-3-0°/45°-LAB-CMU

## LAB DEVICES

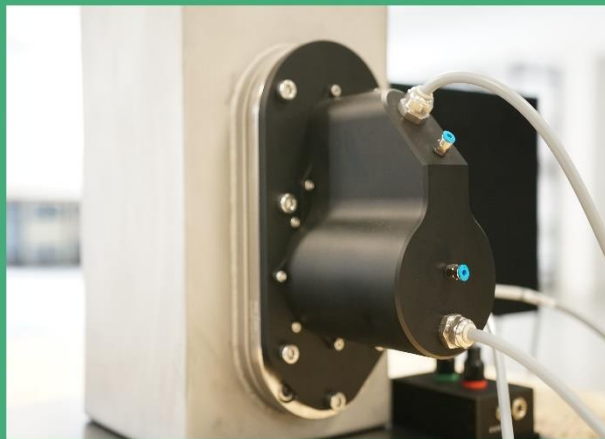
SPECTRO-T-3-0°/45°-LAB-CMU +  
CALIB - ALUMINUM PLATE



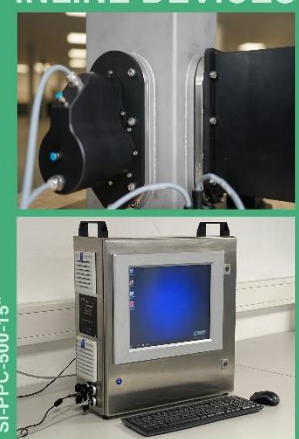
SPECTRO-T-3-DIF/0°-INLINE



SPECTRO-T-3-0°/45°-INLINE



## INLINE DEVICES



SI-PPC-500-15"